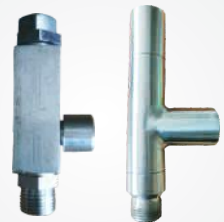
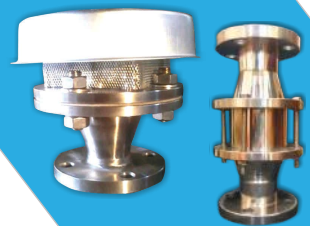




NUTSHELL
ENGINEERS

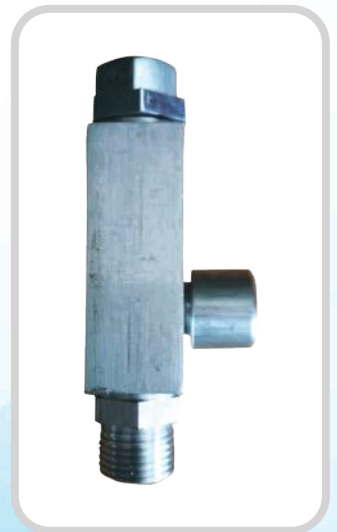


SAFETY RELIEF VALVE

Nutshell Engineers has comprehensive range of safety relief valve for almost every industrial process requirement. These are designed to give maximum protection to the equipment. Valves are designed to meet the requirements of applicable ASME and API have highest standards of efficiency.

Our safety valves are closed bonnet spring loaded in construction & protecting people & environment in chemical , petrochemical, pharmaceutical, oil & food industries. Our valve are widely used in most applications like utilities steam, air, vapor, liquid , oil & many more. We can offer valves in different materials like carbon steel, mild steel , stainless steel.

We can offer sizes from ½ " to 4" with end connections flanged end/ threaded / TC end and pressure up to 35bar g. other sizes , pressure & MOC are available on request.



FLAME ARRESTER

Our high quality Flame Arrestors (Deflagration Arrestor) are spiral type assuring a positive flame stop, It function by absorbing heat from front gas below its auto ignition temperature heat is absorbed by crimped spiral element.

Ease of inspection and low maintenance cost for use on storage tanks containing volatile petroleum products. Our flame arrestors are designed to inhibit flame propagation in gas piping systems. These arrestors are usually installed either horizontally or vertically in gas lines, where fire protection is required. The standard unit consist of a heavy housing, which contains a removable spiral arresting banks usually SS 316/L

Frame arresting bank assembly :

Retractable type, spiral type stainless steel 304, 316 and various others. Other exotic metals that are compatible with body material can be provided.

- Sizes & rating: 2", 3", 4", 6", 8" 150 lbs ANSI b 16. 5 rf,
- Body: Cast steel, stainless CF8, CF8M.

We also provide ATEX certified flame arresters, Emergency relief vent , breather valves, vacuum relief valves .



We are pleased to introduce our sister company **Ventil Components Pvt Ltd** with innovative team of excellent technocrats that has been in the business since last 15 years for Pressure Relief and **Explosion Protection Equipment's** for process industries like Chemicals, Petrochemicals, Pharmaceuticals, Oil & Gas, Power Plants, Cement Plants, Nuclear Plants, OEMs etc.



Ventil Explosion Vents



Ventil Rupture Discs



Filcoflex stands for innovative solutions as a result of 30 years of knowledge and experience. We are a major player in the dry substances sector, with products for bulk and powder transport systems. At Filcoflex we are also specialised in custom production and have a solution for almost everything within our specialities. or all of our products and materials we strive to achieve certification and generate test reports with which we can demonstrate the use of reputable and reliable materials.

Jacob Quick Connect Flexible



Tri clamp Connect Flexible



Custom Made Production



Quick Connect Clamp

Sure Fit Inline



FSC



FDM

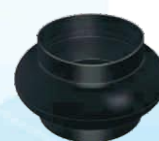


LFR

Weighing Bellows



Standard Silicon



Antistatic Black Silicon



Conical Bellows

ROTARY VALVE

TBMA are able to draw on more than 45 years of experience in the application of rotary valves in many fields of the process industry. The result is an extensive model and size range of rotary airlocks and blowing seals with numerous execution possibilities. This may vary from a simple dust valve to a valve handling product of a critical nature. The TBMA range of valves can be divided into four basic categories:

1. High duty rotary valves
2. Medium duty rotary valves
3. Light duty rotary valves
4. Special duty rotary valves



DIVERTER VALVE

Diverter valves are an essential part of pneumatic and gravity feed conveying systems. TBMA has an extensive range of various diverter valves, which meet the most stringent demands set by industry concerning working safety and reliability. It is therefore possible to offer a suitable solution for a wide range of materials in a variety of working environments.

All diverter valves are available in a wide range of material executions and can be supplied for manual, electric or electro/pneumatic operation in closed guard. Special executions are possible on request.

Below you will find a global review of the TBMA diverter valve range:

1. Two way flap type diverter valves
2. Dual channel plug diverter valves
3. Ball Type diverter valve
4. Gravity feed diverter valves



Atex Certified



Solutions in a Nutshell

1. Installation Commissioning Modification
2. Engineering services - Plant audit & Plant Inspection
3. Consultation on dust explosion, Dust explosion plant Audit
4. Maintenance of System





We Just Don't Sell Products, We Deliver Solutions...!

For Safety Valve, Rotary & Diverter Valve, Flame Arrester, Flexible Connection
Contact : 7774069908 / 7774061118

For Explosion Vent, Explosion Protection System Rupture Disc
Contact : 7774061105 / 06 / 04

For Service & Support - 7774051604 / 7774061104
• **Email** : info@nutshellengg.in • **Website** : www.nutshellengg.in